



Lay of the Land

Rhiannon Van Muysen

## Lay of the Land,

Lay of the Land brings together work created throughout 2011 and 2012, whilst living in the beautiful mountainous landscape of Wester Ross and following a number of journeys to Iceland.

Iceland is a land in formation. As glacier's grind their way through the landscape, carving valleys and mountains in their wake, magma chambers just below the earth's crust bubble and churn, spewing out molten rock and iron from deep within the planet's core. In places, scalding sulphurous mud gurgles and splutters through mineral rich earth as tectonic plates contort and contract. The land itself feels alive; in a constant state of flux and evolution.

The geologically dramatic landscape of the North West Scottish highlands, now quieted, weathered and still, shares with Iceland a similarly turbulent formation. Steep, craggy, crumbling peaks once sat amid solid rivers of ice, acting as islands above grinding, glacial earth movers. As can be seen on Iceland's southern coast at Skaftafell and Vatnajökull Glacier, torrents of melt water would once have flown down Scotland's mountain sides and over black volcanic sands to the sea.

Through processes of chance and control, my aim has been to create images which appear to have formed naturally over time. I like to experiment with scale and altered perspectives; sometimes focusing on close up biological and geological structures as well as rising up above vast aerial landscapes. The movement of water through the landscape both as life enabler and sculpting force offers a consistent focus and has led me to develop a variety of working techniques. I often work with processes involving the repeated freezing and subsequent melting of inks, pigments and minerals onto paper, allowing the melt water to etch its path into the paper surface. The work continues to change and develop subtly over time as salt and copper crystals gradually form on the paper surface and iron fragments become oxidized.

Rhiannon Van Muysen

# Lay of the Land

EXHIBITION OF NEW WORK INSPIRED BY THE LANDSCAPE AND GEOLOGY  
OF NORTHERN SCOTLAND AND ICELAND

By

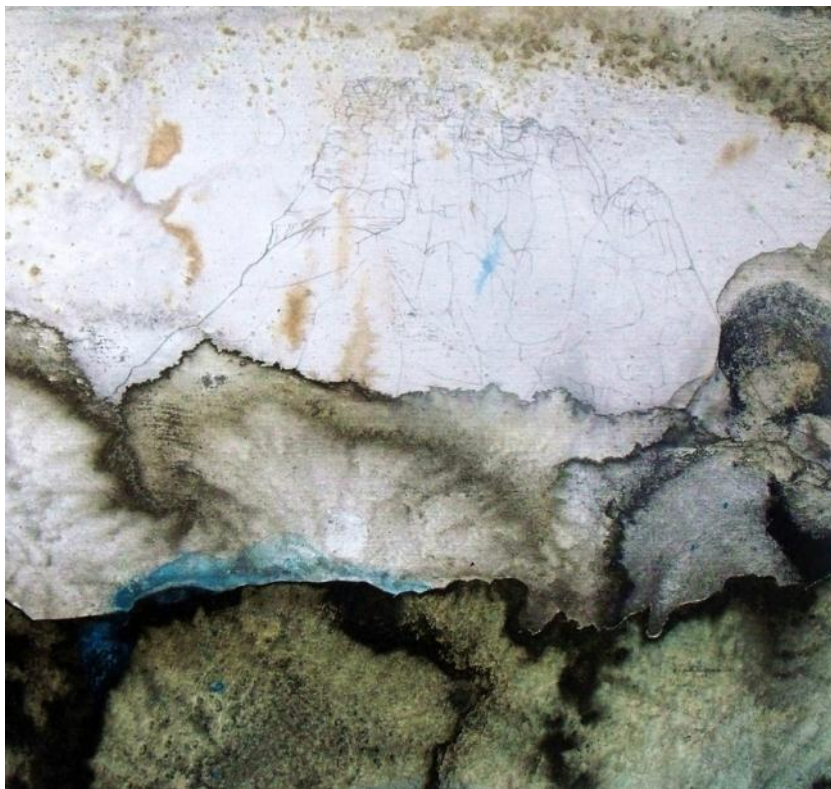
Rhiannon Van Muysen

Saturday 30th March — 1st June 2013

RHUEART GALLERY,

RHUE, ULLAPOOL, ROSS-SHIRE SCOTLAND IV26 2TJ

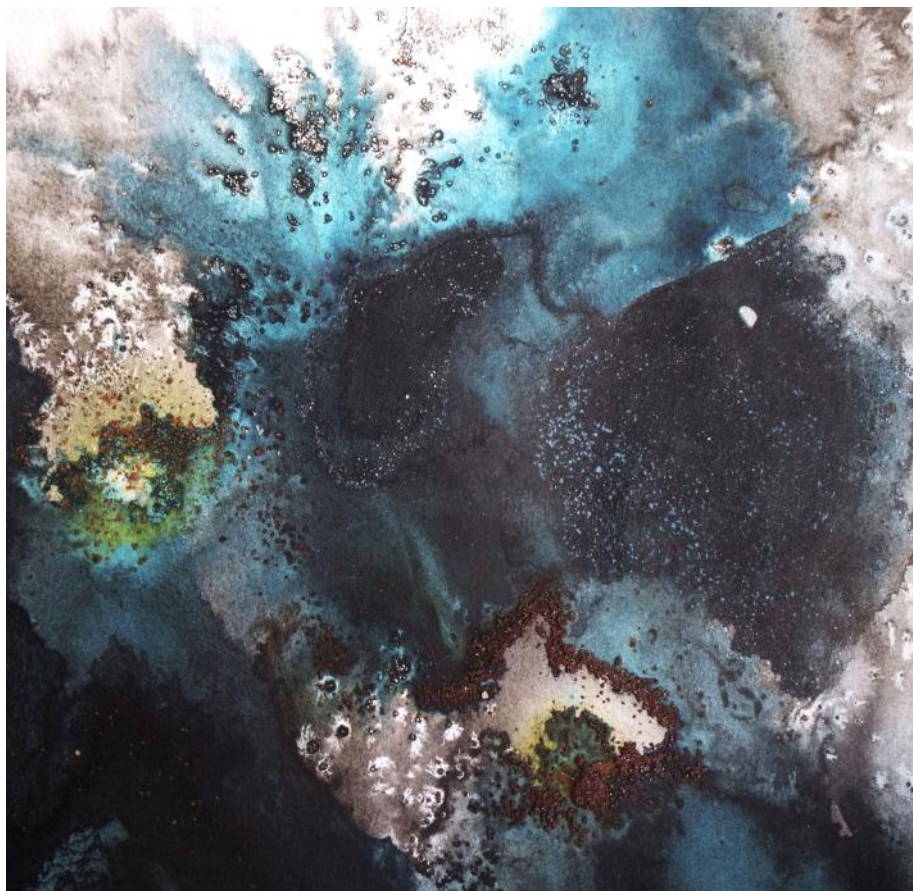




***Retreat***, collage, ink, iron and pencil on paper, 17cm x 17cm, 2012.



*Island Mountain*, ink, iron and pencil on paper, 17cm x 10cm, 2012.



***Seltun***, ink iron, salt and verde gris on paper, 19cm x 19cm, 2013



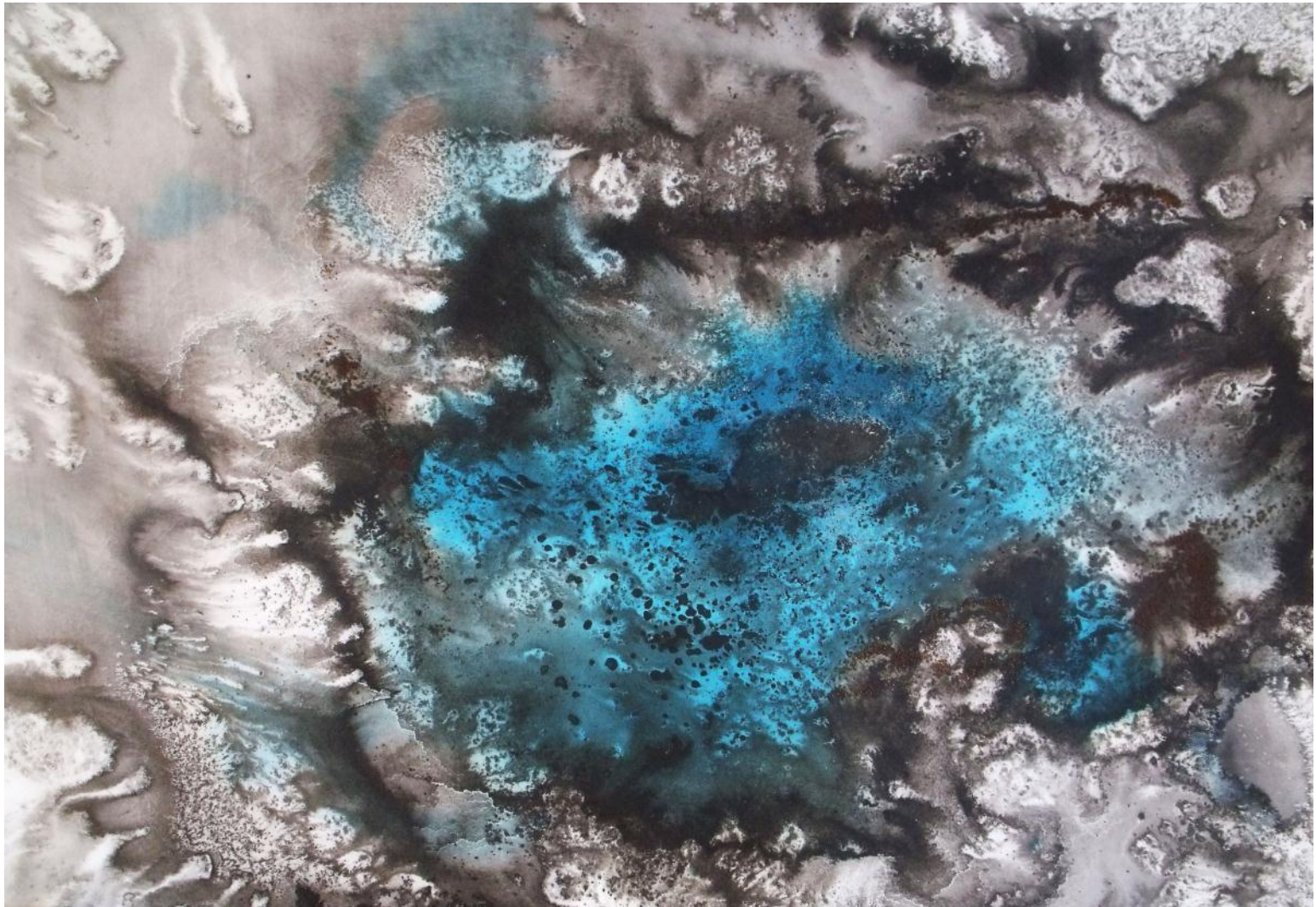


*Krysuvik*, ink iron, salt and verde gris on paper, 15cm x 15cm, 2013.



*Gunnuhver*, Ink, iron, salt and verde gris on paper, 15cm x 15cm, 2013.





*Vatnajokull*, frozen ink melted on paper, salt, iron and pigment, 55cm x 75cm, 2012.





*Reykjanes*, ink, iron, salt and verde gris on paper, 63cm x 90cm, 2012.



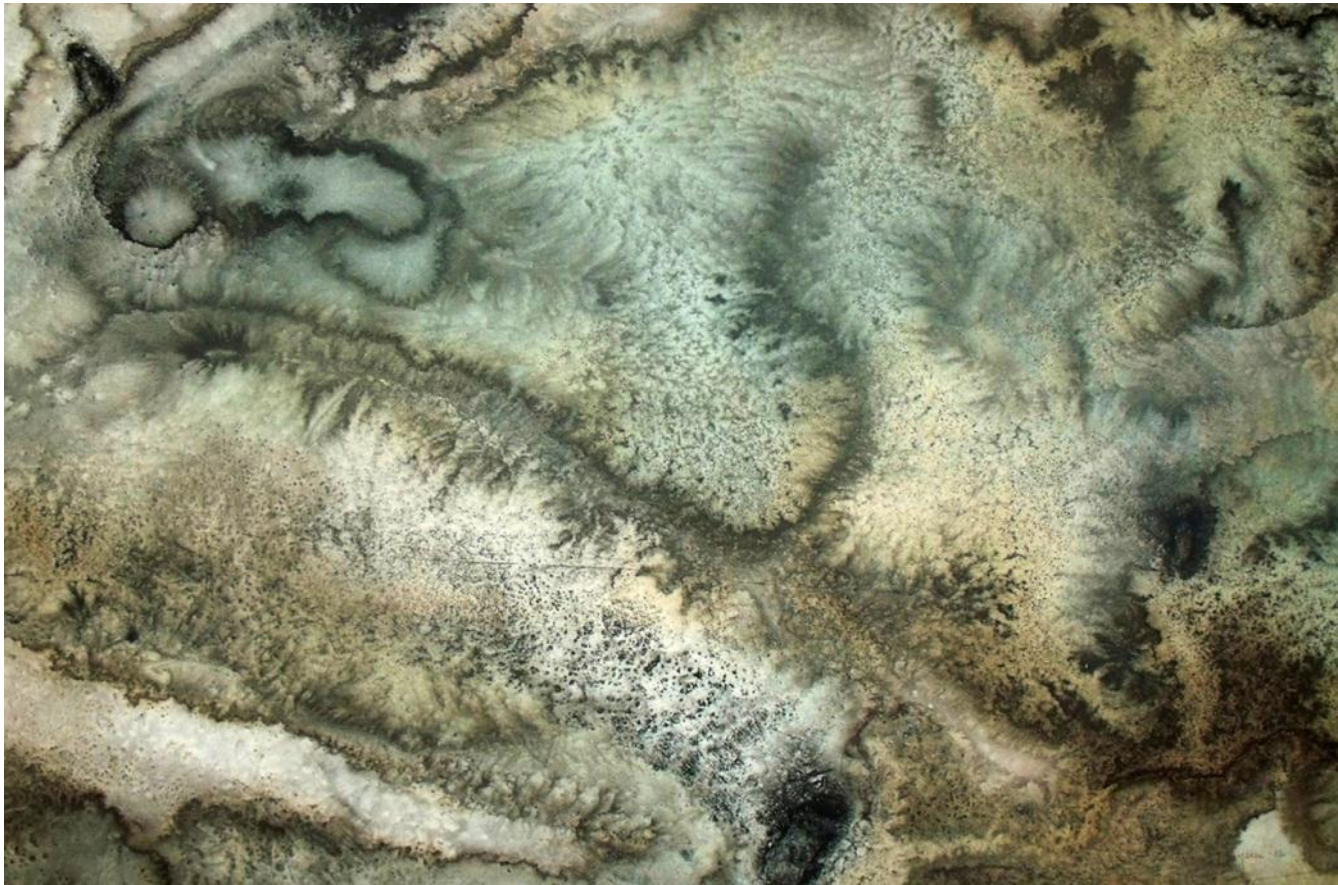


*Skaftafell*, frozen ink melted on paper, salt, iron and pigment, 55cm x 75cm, 2012.



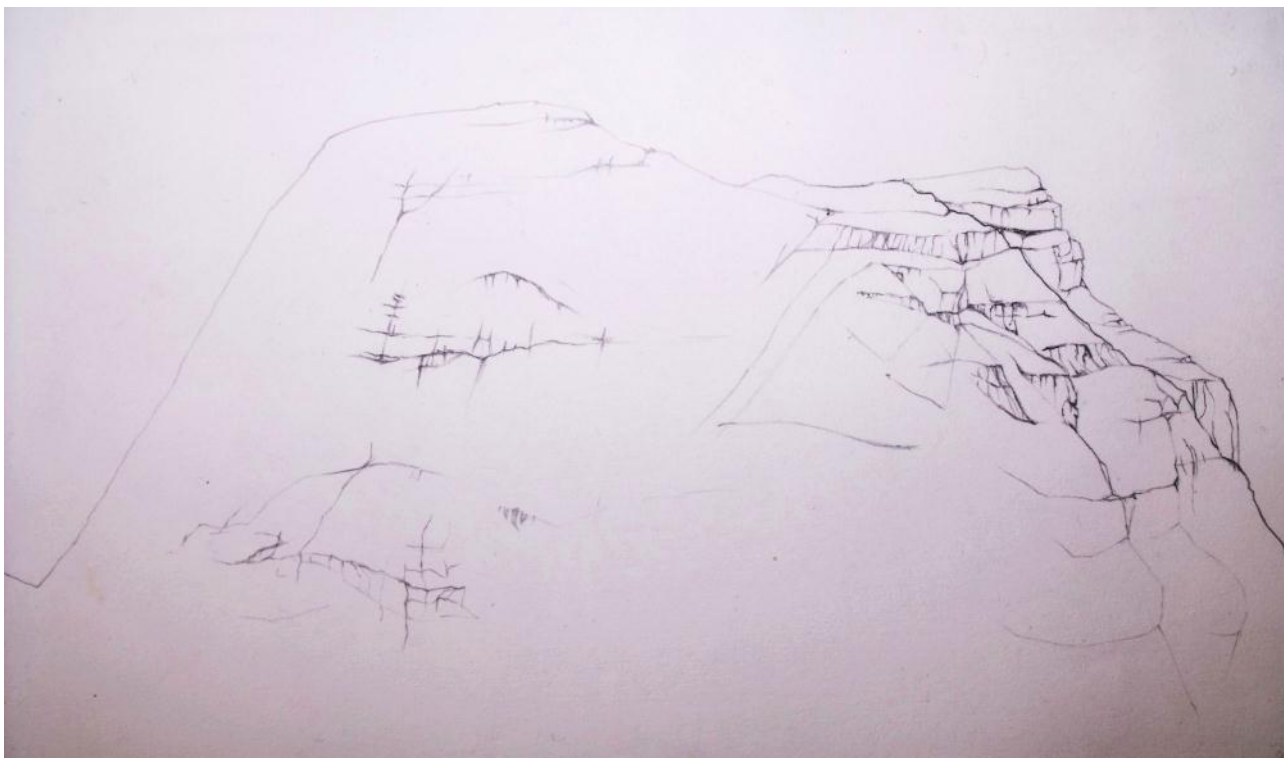


*Incubator Ocean*, ink, iron, salt and verde gris on paper, 60cm x 80cm, 2012.



*After the Melt*, frozen ink melted on paper, salt, iron and pigment, 40cm x 60cm, 2011.





*Sail Garbh*, pencil on paper, 17cm x 25cm, 2012.





*Sail Ghorm*, pencil on paper, 17cm x 25cm, 2012.

# Rhiannon Van Muysen

(b. 1984)

## Education

- 2000-2001 Bridgehouse Art, Ullapool.
- 2001-2002 Glasgow School of Art.
- 2004-2005 Bridgehouse Art Ullapool.
- 2006-2010 Duncan Of Jordanstone College of Art, Dundee, B.A. Hons Fine Art.
- (2009- San Diego State University, Transatlantic Exchange Program.)

## Exhibitions

- 2012- Members at Eden, Eden Court Inverness.
- 2011- Members Show, An Talla Solais, Ullapool.
- 2011- Retrace, An Talla Solais, Ullapool.
- 2010- Fabric of The Land, Aberdeen University.
- 2010- Miscellaneous Enquiries, Collaborative project in association with D.A.I.R. (Dundee Artist's in Residence) Dundee.
- 2010- Generator Project, Members show, Dundee.
- 2010- Sweet F.A., Roseangle Gallery, Dundee.
- 2007- Craichaus, Peddie Street Industrial Estate, Dundee.
- 2006- Emerging Practice, Bridgehouse Art, Ullapool.
- 2004- Off The Wall, Smoo Cave, Durness.
- 2002- Cityscape, Kelvingrove Art Gallery, Glasgow.
- 2001- Portfolio Show, Bridgehouse Art, Ullapool.

## Awards

- 2011- Hi-Arts, Visual Art Award.
- 2010- Wasps Studios Dundee, New Graduate Runner up.
- 2009- Centenary Trust Scholarship.

## Residency and Work Experience

- 2004- Trainee/Artist's Assistant, New Dynamics, Time Based Media Residency, Durness, Scotland.
- 2002- Assistant to Lotte Glob- Sculptress and Ceramicist.

## Selected for Participation

- 2010- Roche Continents 2010, Salzburg, Austria.



# RHUEART

Rhueart Gallery, Ullapool, Ross-shire, Scotland IV26 2TJ

01854612460    [info@rhueart.co.uk](mailto:info@rhueart.co.uk)    [www.rhueart.co.uk](http://www.rhueart.co.uk)