

Greenland: At the Margins



JANE RUSHTON



RHEA BANKER

Greenland: At the Margins

Jane Rushton and Rhea Banker

20 Aug – 31 Oct 2016

In the summer of 2013 artists Jane Rushton and Rhea Banker spent a period of time together in and around Ilulissat Kangia and Eqip Sermia, on Greenland's west coast, gathering material for a project that would bring their two artforms together in dialogue.

Of course, the stunning landscape of west Greenland was a huge inspiration but, more particularly, they were each drawn to the complex relationships between the seemingly permanent geological elements of nature and the more transient elements like ice, water and the lichen flora.

The detail and complexities of these relationships provoked both spiritual and poetic responses in both artists who have each also brought a love of maps and cartography into their work.

This exhibition offers a selection of works made by each artist which highlight the visual dialogue that occurred.

RhueArt Gallery



Jane Rushton

At the Margins

Watercolour, inkjet and ink on Indian paper 2014



Jane Rushton

Borderland

Watercolour, inkjet, wax and ink on Indian paper 2014



Jane Rushton

Elemental Journey

Watercolour, inkjet, wax and ink on Indian paper 2014



Jane Rushton

Mutuality

Watercolour and inkjet on Japanese paper 2014



Jane Rushton

Under the Ice II

Watercolour, graphite and wax on Japanese paper 2014



Jane Rushton

Through Sea and Ice

Watercolour, inkjet, wax and ink on Indian paper 2014



Jane Rushton
Qaasuitsup
 Watercolour, inkjet, wax and ink on Indian paper 2014



Jane Rushton
West Greenland interface 1
 Watercolour, inkjet, wax and ink on Indian paper 2014



Jane Rushton

Totality

Watercolour, inkjet, wax and ink on Japanese paper 2014



Jane Rushton

Meeting Points

Watercolour, inkjet, wax, graphite and ink on Japanese paper 2014



Rhea Banker

Mapping the Margins

Digital print on archival paper 2014 limited edition 1/10



Rhea Banker

Davis Strait

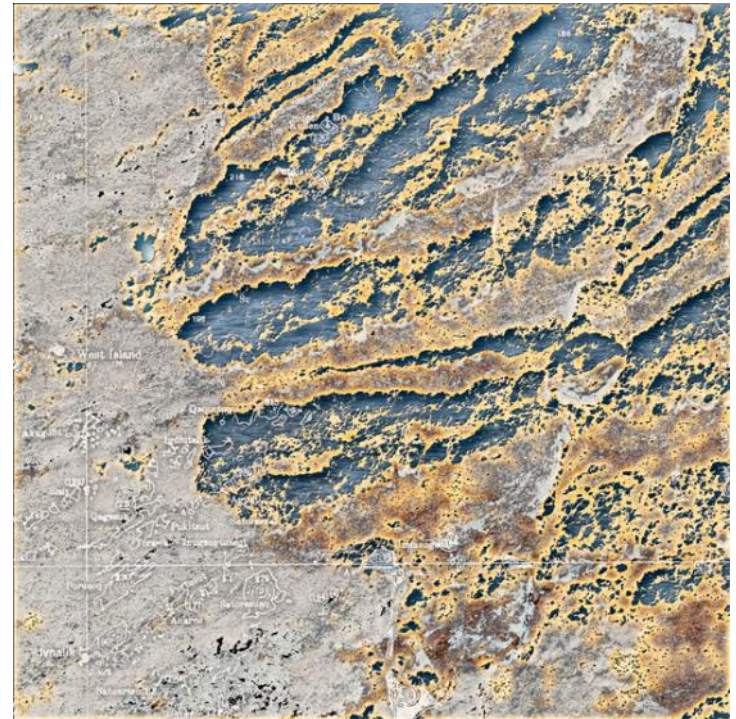
Digital print on archival paper 2014 limited edition 1/10



Rhea Banker

Inclusion

Digital print on archival paper 2014 limited edition 1/10



Rhea Banker

Pujog - Fog

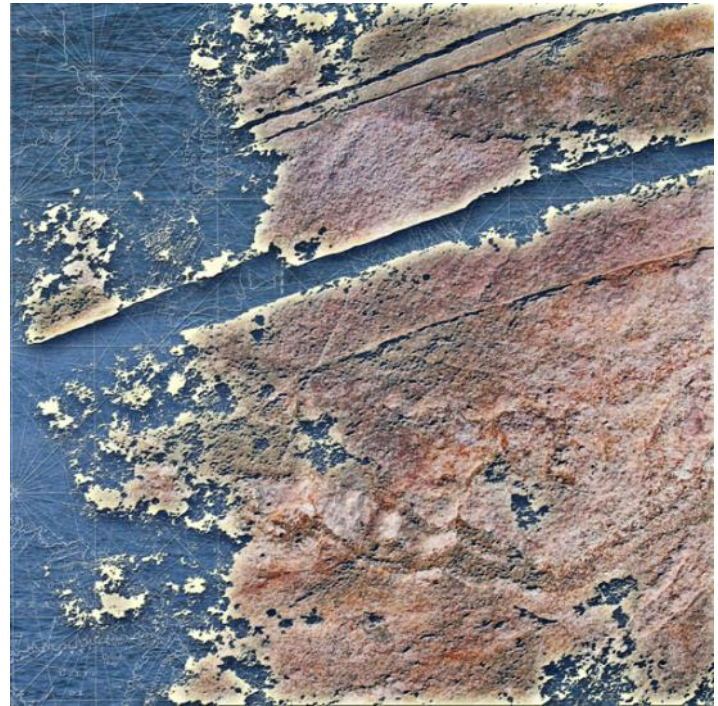
Digital print on archival paper 2014 limited edition 1/10



Rhea Banker

Uiarassuit -The Big Stones

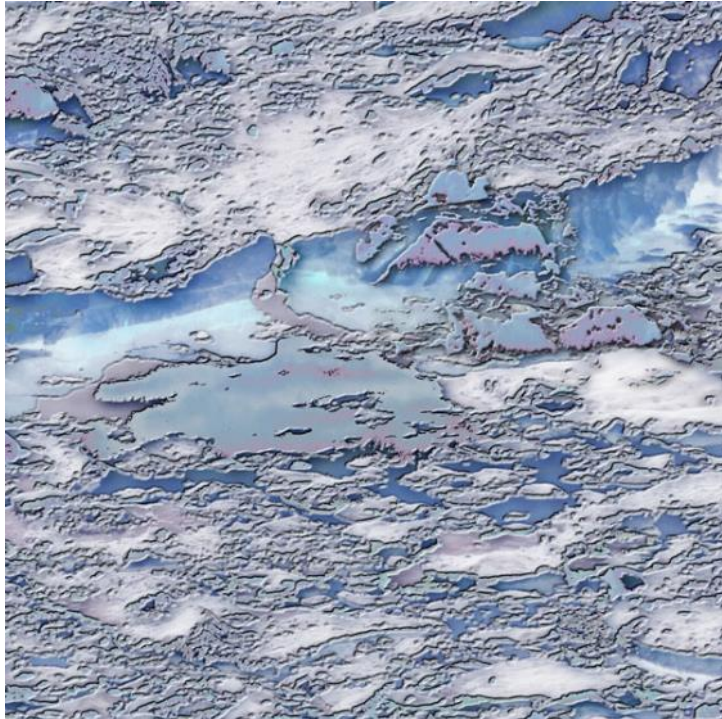
Digital print on archival paper 2014 limited edition 1/10



Rhea Banker

Imermik -on the water

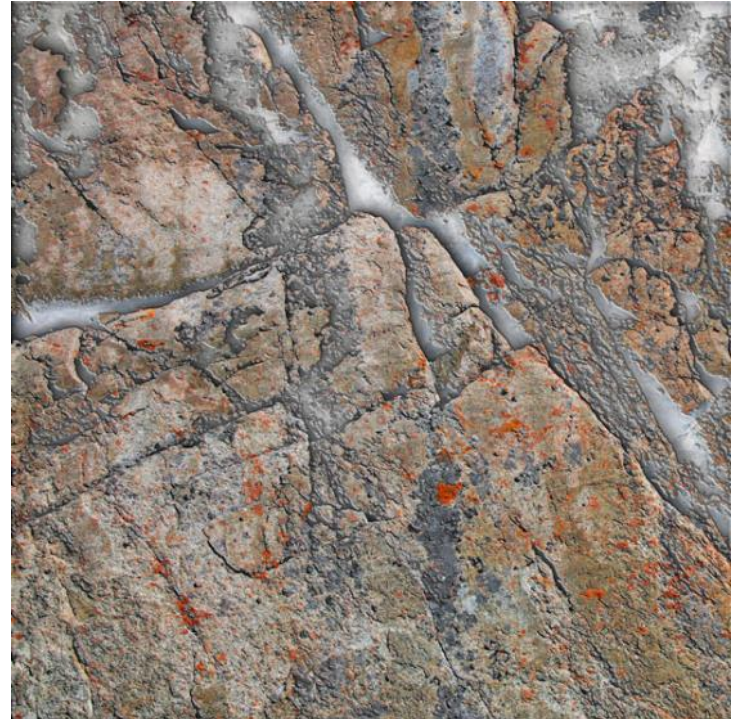
Digital print on archival paper 2014 limited edition 1/10



Rhea Banker

River beneath the Ice

Digital print on archival paper 2014 limited edition 1/10



Rhea Banker

Avaanaa – North

Digital print on archival paper 2014 limited edition 1/10

Jane Rushton: B.A., M.Phil (Lancaster)

The work that I make explores the disciplines of drawing, painting, collage and digital as a way of investigating the world around me. Themes of fragility, transience and endurance provide a focus, with interplay between micro and macro producing elusive and contemplative imagery that leaves room for interpretation.

Drawing on the processes that create the features and characteristics of the natural environment observed during field trips, studio investigations reflect and play out these processes on paper and canvas through a series of tests, versions and experiments.

More recently, though not exclusively, the geographical focus has been on remote Northern areas including the Arctic, where I have undertaken extended field trips, either alone, with other artists, or with scientists. The Arctic environment, as well as having a raw beauty and spiritual essence, is emblematic in terms of concerns with climate change, and it provides the focus of much scientific work that tries to understand the processes at play, and their significance. I have become interested in drawing on the knowledge and methodologies of science as a means of expanding my approach to material investigations, with the ultimate aim of making visually poetic work that provokes a different type of engagement; of seeing, valuing, knowing and understanding.

I have many years experience as a lecturer in Fine Art, and 20th Century Art History and Culture.

Solo & Dual shows:

- 2015 *Greenland: At the Margins*, touring Ilulissat Kunstmuseum, Ilulissat, Nuuk Kunstmuseum, Nuuk, Taseralik Culture Centre, Sisimiut, Greenland
- 2014 *Greenland: At the Margins*, Grønlandske Hus, Copenhagen, Denmark
- 2011 Arctic Dialogues, Environment Centre, Lancaster University
- 2010 Taseralik Cultural Centre, Sisimiut, Greenland
- 2009 Katuak Cultural Centre, Nuuk, Greenland
- 2007 AtticSalt, Edinburgh
- 2006 *Findings: The Hindburn Project*, Environment Centre, Lancaster University

Group/selected shows:

- 2014 *Summer Exhibition*, Inchmore Gallery, Inverness,
- 2014 *Fabric of the Land*, Union Square, Aberdeen
- 2013 *Fabric of the Land*, University of Aberdeen & Dynamic Earth, Edinburgh
- 2012 *Hidden Landscapes*, Lime Gallery, Settle, North Yorkshire
- 2012 *Fabric of the Land*, University of Aberdeen
- 2012 *Close to Home*, East Street Arts, Leeds
- 2011 *Environmental Dialogues*, CORE, Festival Square, Edinburgh
- 2010 *Experimentality*, Conference Exhibition, Peter Scott Gallery, Lancaster Uni
- 2008 *Location*, Michael West Gallery, Isle of Wight
- 2006 Institute of Physics, Portland Place, London
- 2006 Alexandra Gallery, University of Cumbria
- 2006 *Findings: The Hindburn Project*, Environment Centre, Lancaster University
- 2005 The Spiral Gallery, Settle, North Yorkshire
- 2005 *Habitats Art & Science*, Environment Centre, Lancaster University

Awards:

- 2014 Creative Scotland, International Programme
- 2006 Arts Council England: Research Arctic Greenland
- 2008 Arts Council England: Arctic Dialogues Svalbard
- 2009 Lancaster University Research Grant: *Arctic Dialogues*
- 2009 Lancaster University Travel Grant: Katuak, Nuuk, Greenland

Publications, Seminar and Symposium Papers:

- 2014 *Greenland: At the Margins*, exhibition catalogue, 28 pp.
- 2010 *Arctic Dialogues*, exhibition catalogue, 22 pp.
- 2011 *Filtering Arctic Light: Chemical Encounters Between Art & Science*, Department of Anthropology, Manchester University
- 2012 *Home Ground, Close to Home*, Symposium, East Street Arts, Leeds

Rhea Banker

Rhea Banker is a photographer and award winning book designer. Although she has been living and working in New York City for 30 years, much of her work is based on journeys to the rocky edges of the world. Her abstract studies of patterns within the Earth's ancient surfaces have been exhibited in New York City, Edinburgh, Scotland, Scotland's Outer Hebrides, and in Buenos Aires, Argentina. Much of her work is based on ancient movements recorded within the Earth's crust and maps of imagined lands. Her textural abstract images are her reflections of these movements, and reveal her own attempts at understanding and sharing stories of an ever-changing planet.

In addition to Rhea's photographic work, she is a professional book designer. Her designs have won multiple awards, and have been repeatedly exhibited at the New York Bookbinder's Exhibitions in New York City.

A graduate of the State University of New York at Buffalo, Rhea received her BFA in Design and a BA in Art History. While there, she was the winner of the Evelyn Rumsey Lord Travel Fellowship. She has lectured undergraduates in Medieval Art History as well as in the History of Photography.

Exhibitions

2012 – Penn State College – Permanent Installation – Art and Science Collaboration – Reading Pennsylvania, USA
2011 – Queen’s Hall – Permanent installation – *Atlas Novus* – Edinburgh, Scotland
2010 – Stornoway Trust Nature Centre – permanent installation – Isle of Lewis, Scotland
2009 – Bernera Historical Museum – *Textures of an Island* – Installation to benefit the Bernera local history project – Isle of Bernera, Scotland
2008 – Kirkland & Ellis Gallery – *Stone and Bronze* – show highlighting the Hebrides and the Orkneys – New York City, New York
2008 – Stornoway Airport – Permanent Installation Part 2 – *For the Telling* – Isle of Lewis, Scotland
2008 – Canongate Kirk – Permanent Installation – *Vanishing Views* – Edinburgh, Scotland
2008 – Pearson Educación Argentina – *Tiera del Fuego/ Stone and Sea* – solo exhibit – Buenos Aires, Argentina
2007 – Stornoway Airport – Permanent Installation Part 1 – *Circling the Stones* – Outer Hebrides, Scotland
2007 – Ceres Gallery – *Recent Excavations* – solo exhibit – New York City, New York
2007 – St. Paul’s Episcopal Church – *Anonymous Pilgrims of Chartres* – Permanent Installation – Brooklyn, New York
2007 – Pearson Plc. Corporate Offices – small works – White Plains, New York
2006 – AtticSalt Gallery – Hebridean Works – Edinburgh, Scotland
2006 – Krasdale Gallery Group Show, New York City, New York
2006 – Cathedral of St. John Divine – *Anonymous Pilgrims of Chartres* – installation – New York City, New York
2006 – Square Show, Ceres Gallery – New York City, New York
2005 – Annual JFS Juried Show – Edison, New Jersey
2005 – New York Interchurch Center Gallery – *Signs and Surfaces* – Reflections of Scotland’s Outer Hebrides – solo exhibit – New York City, New York
2004 – Ceres Gallery – *Meridians: Scotland’s Outer Hebrides* – solo exhibit – New York City, New York
2004 – Constellation Group Show, Ceres Gallery – New York City, New York
2003 – Callanish Visitor Center Gallery – New Work – Isle of Lewis, Scotland
2003 – Square Show, Ceres Gallery – New York City, New York
1997 – New York Bookbuilders Design Show winner – New York City, New York
1995 – Museum of Women’s History Installation – Cooperstown, NY

Institutional Collections

Island Book Trust – Port of Ness, Isle of Lewis, Scotland
United Methodist Church Commission for Inter-Religious Concerns – New York City
St. Paul’s Episcopal Church – Brooklyn, New York