

Florence Jamieson



Florence Jamieson

15 August—15 October 2015

RHUEART GALLERY,

RHUE, ULLAPOOL, ROSS-SHIRE SCOTLAND IV26 2TJ

01854612460 flick@rhueart.co.uk www.rhueart.co.uk



FLORENCE JAMIESON

Florence Jamieson was born in Glasgow in 1925 and now lives in Ullapool on the North West coast of Scotland.

She attended Glasgow School of Art Evening Classes and subsequently taught Still Life painting there.

She has exhibited at the Royal Scottish Academy, Society of Scottish Artists, Royal Scottish Society of Painters in Watercolour and the Glasgow Institute. She has also held numerous joint and solo exhibitions mainly in Glasgow, Edinburgh, Perth and Ullapool. In 2014 she was one of four remaining living artists chosen to provide a selection of her work for the prestigious 'Glasgow Girls' Kirkcudbright summer exhibition.

She received the Royal Scottish Academy Award and the Royal Glasgow Institute Torrance Award.

The artist is represented in various public collections including:

- Kelvingrove Art Gallery, Glasgow
- Glasgow University Hunterian Art Gallery
- Scottish Arts Council Collection
- Gracefield Arts Centre, Dumfries
- Scottish Fisheries Museum, Anstruther



Winter Hosta leaf 59 x 52 cm mixed media on paper 1980 £500



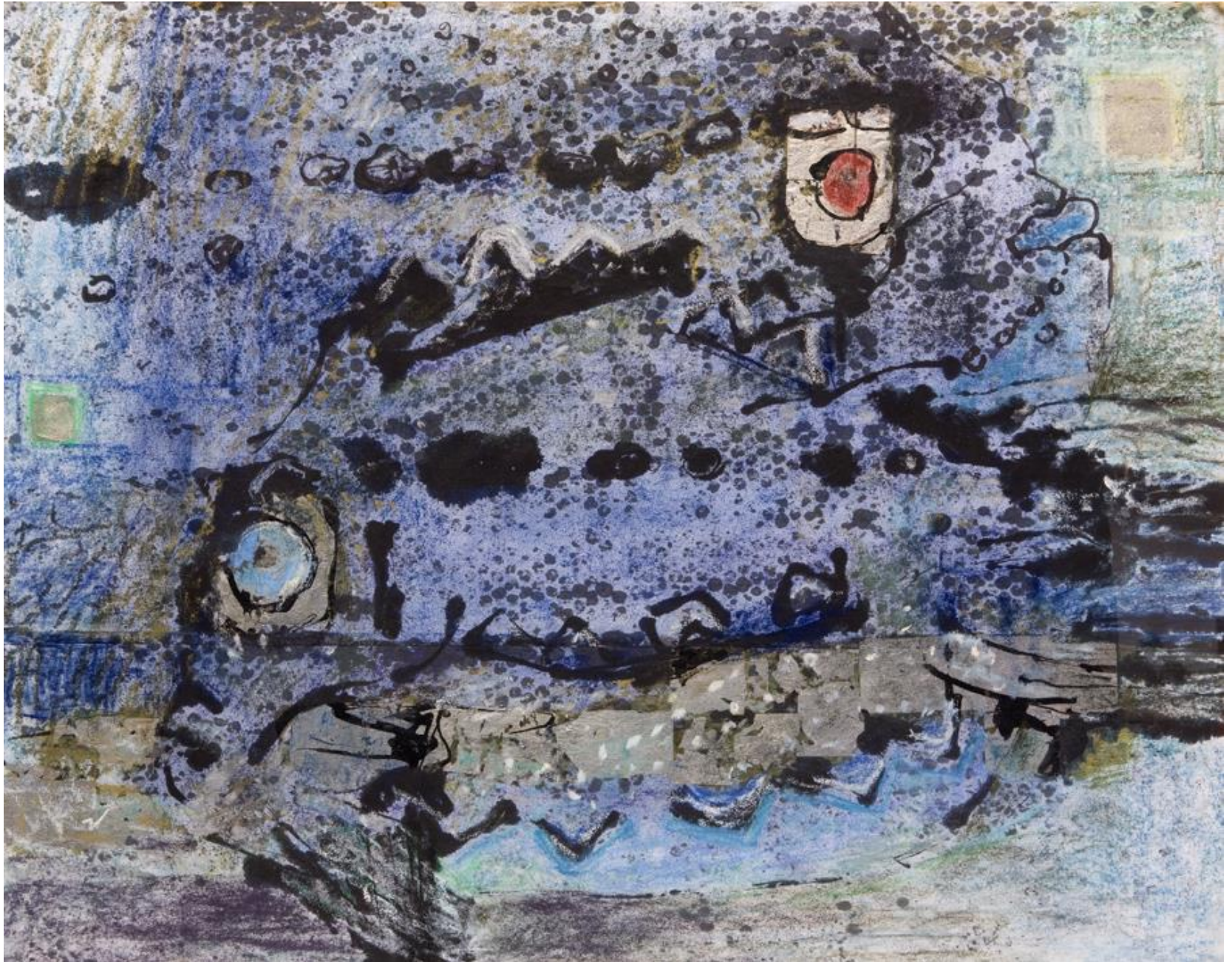
Ardfern Oyster Shell

107 x 76 cm

mixed media on paper

1994

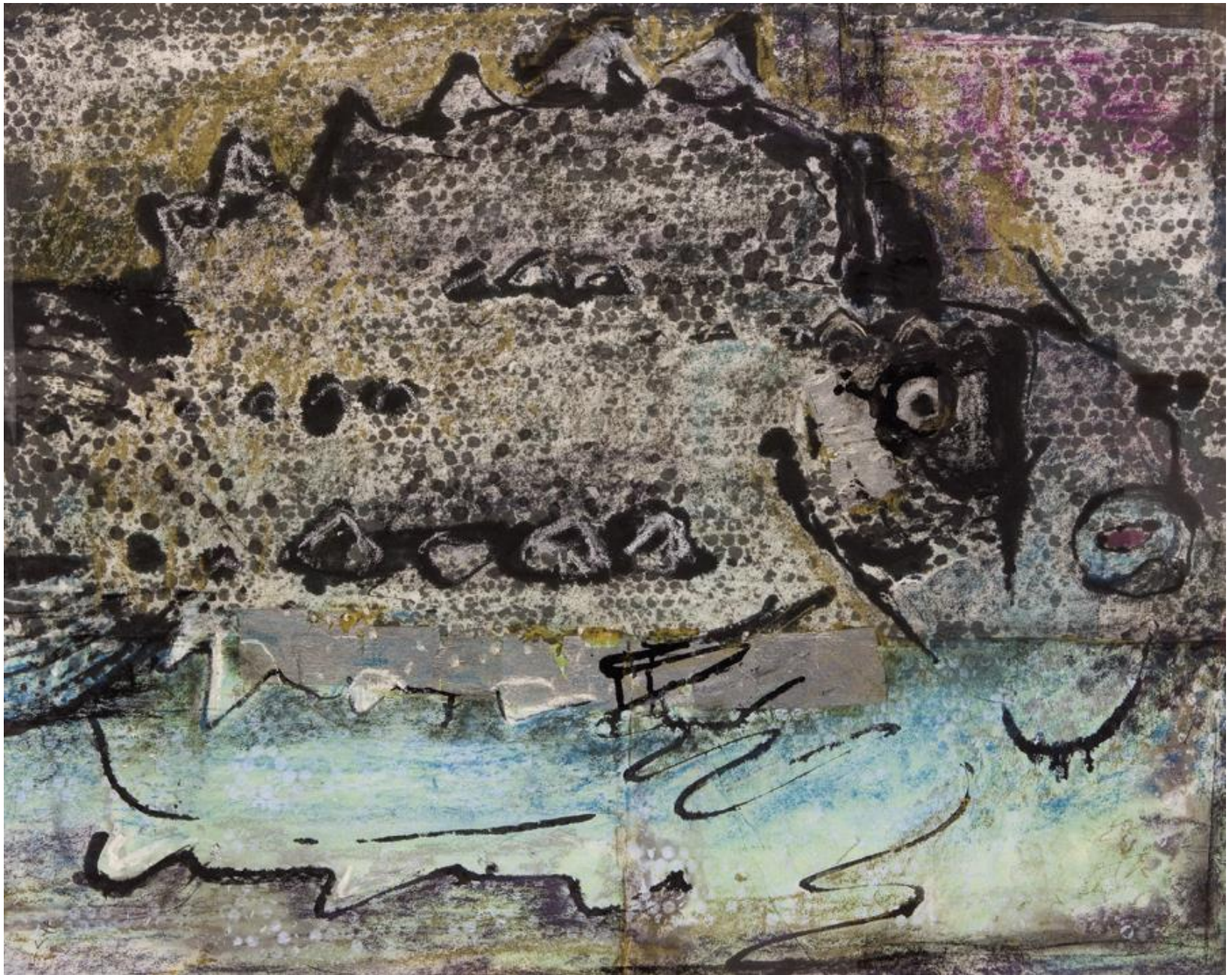
£1300



Two Lump Fish

102 x 85 cm

mixed media on paper 1980 £900



Lump Fish

101 x 85 cm

mixed media on paper

1980

£900



Rock Fissure, Ardnamurchan

97 x 74cm

Mixed media on paper 1995 £800



Dark Sunset

96 x 68 cm

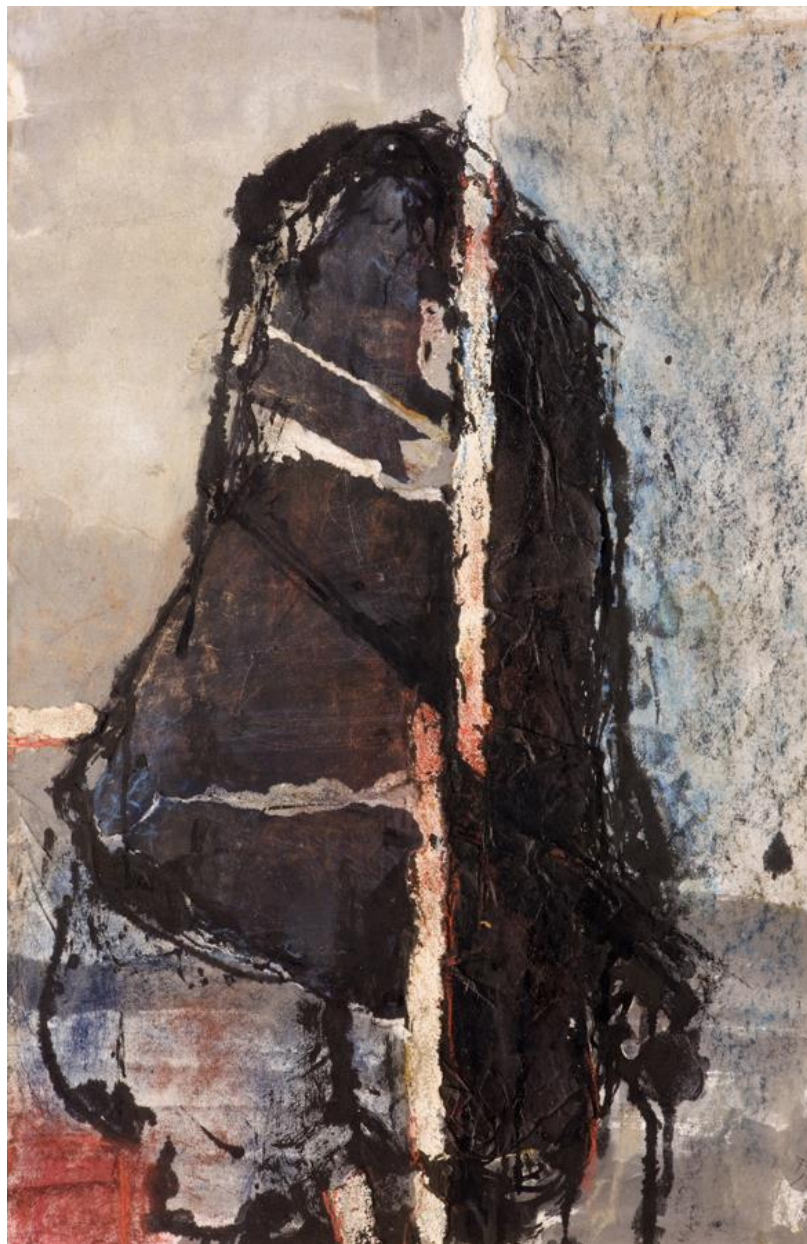
Pastel on paper 1995 £750



Coastal Sunset

96 x 68 cm

Pastel on paper 1995 £750



Lewis Gneiss

63 x 86 cm

mixed media on paper

1990

£750



Pine Cone 57 x 69 Ink on paper 1985 £600



Larch Branch 71 x 95 Ink on paper 1985 £600



Elder Berries 53 x 95 Ink on paper 1985 £600



Into the woods

54 x 66

Ink on paper

1969

£450



Three Trees 61 x 63 cm Ink on paper 1969 £450



Autumn Mountain, Glen Lyon

44 x 26cm

watercolour and ink on paper

1970

£400



Black Cloud sunset 54 x 38cm watercolour and ink on paper 1970 £350



Winter Mountain, Glen Lyon

44 x 26cm

watercolour and ink on paper

1970

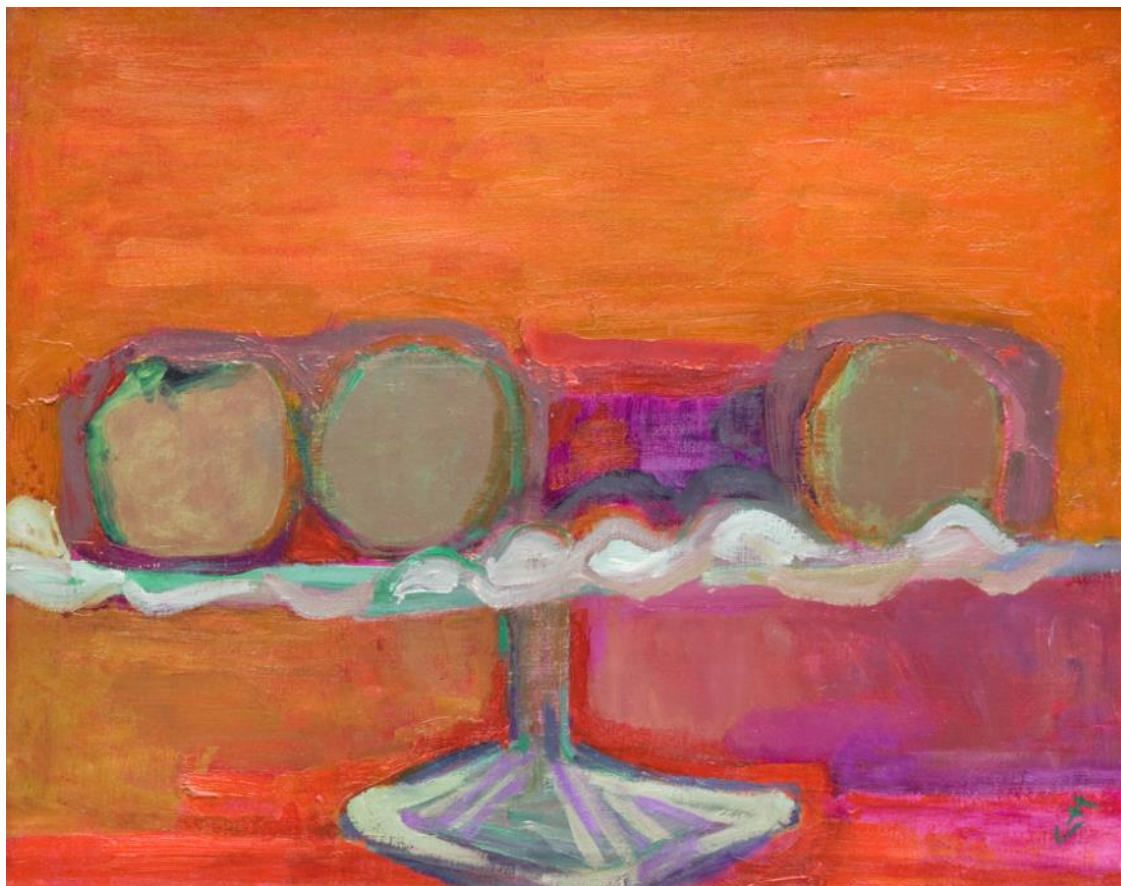
£400



Daffodils

50 x 66cm

Oil on canvas 1995 £650



Green Apples

58 x 48 cm

Oil on canvas 1995

£600



Dark Peaches

58 x 45cm

Oil on canvas 1995

£600



Daisy Flowers

62 x 50 cm

Oil on canvas 1995

£600

Ceramics

Florence, along with her husband Robert Sinclair Thomson (1915-1983) were the first artists to open a commercial studio pottery in Glasgow after the Second World War. Throughout the 50s and 60s they worked from their house in Clouston Street producing hundreds of hand-made items such as mugs, plates and bowls.

Recognised in their own right as accomplished Scottish painters, Florence and Robert created original works of Ceramic art by using specialist freehand slip technique to apply designs to many items from small jewellery to Large Pots and wall plaques.

We are delighted to be able to display some of Florence's ceramics from that period during the exhibition.





Mother and two children NFS



Starry night Cat NFS

For more information about the exhibition please
contact Flick Hawkins

RHUEART

Rhueart Gallery, Ullapool, Ross-shire, Scotland IV26 2TJ

01854612460 info@rhueart.co.uk www.rhueart.co.uk