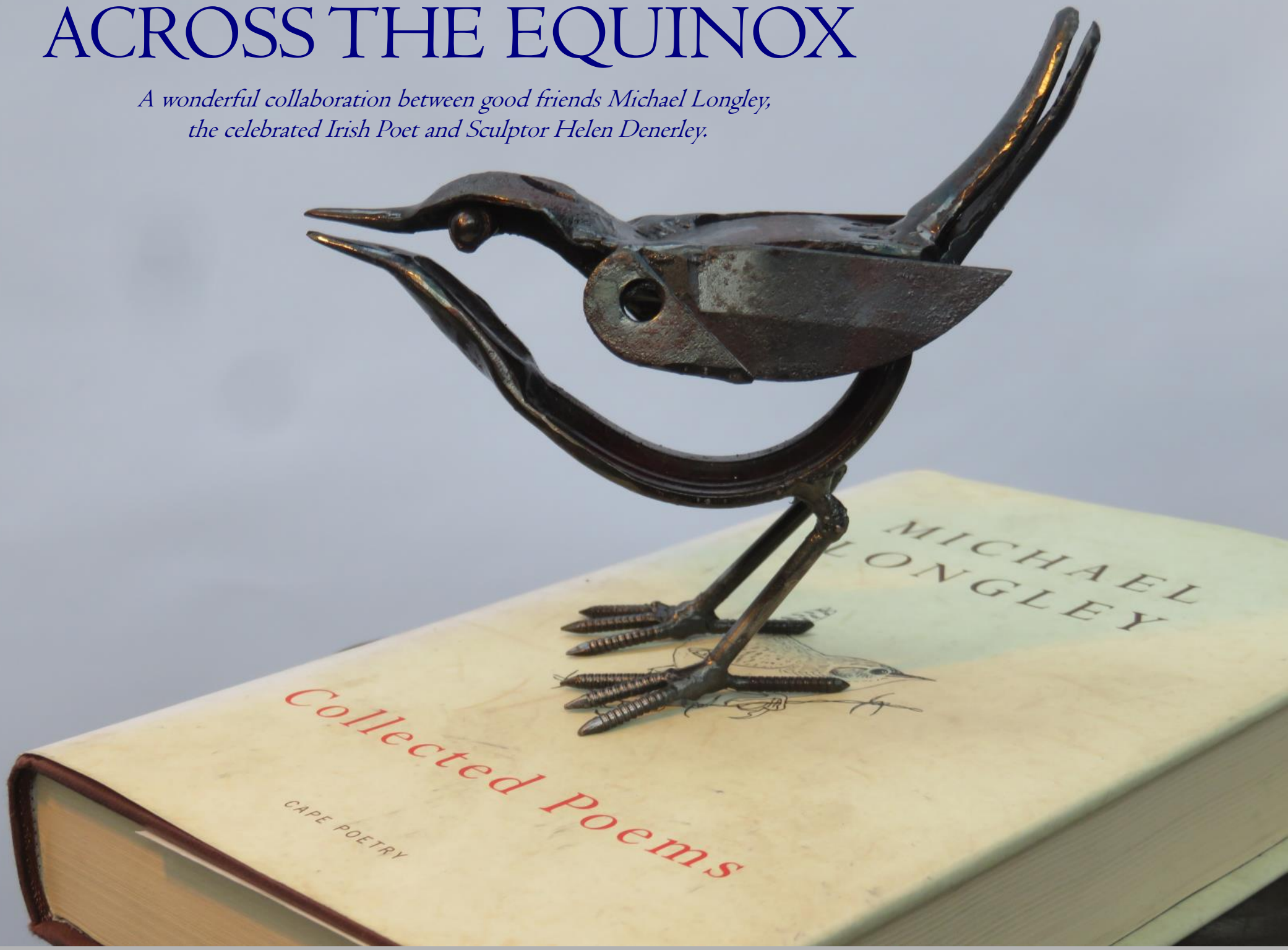


# ACROSS THE EQUINOX

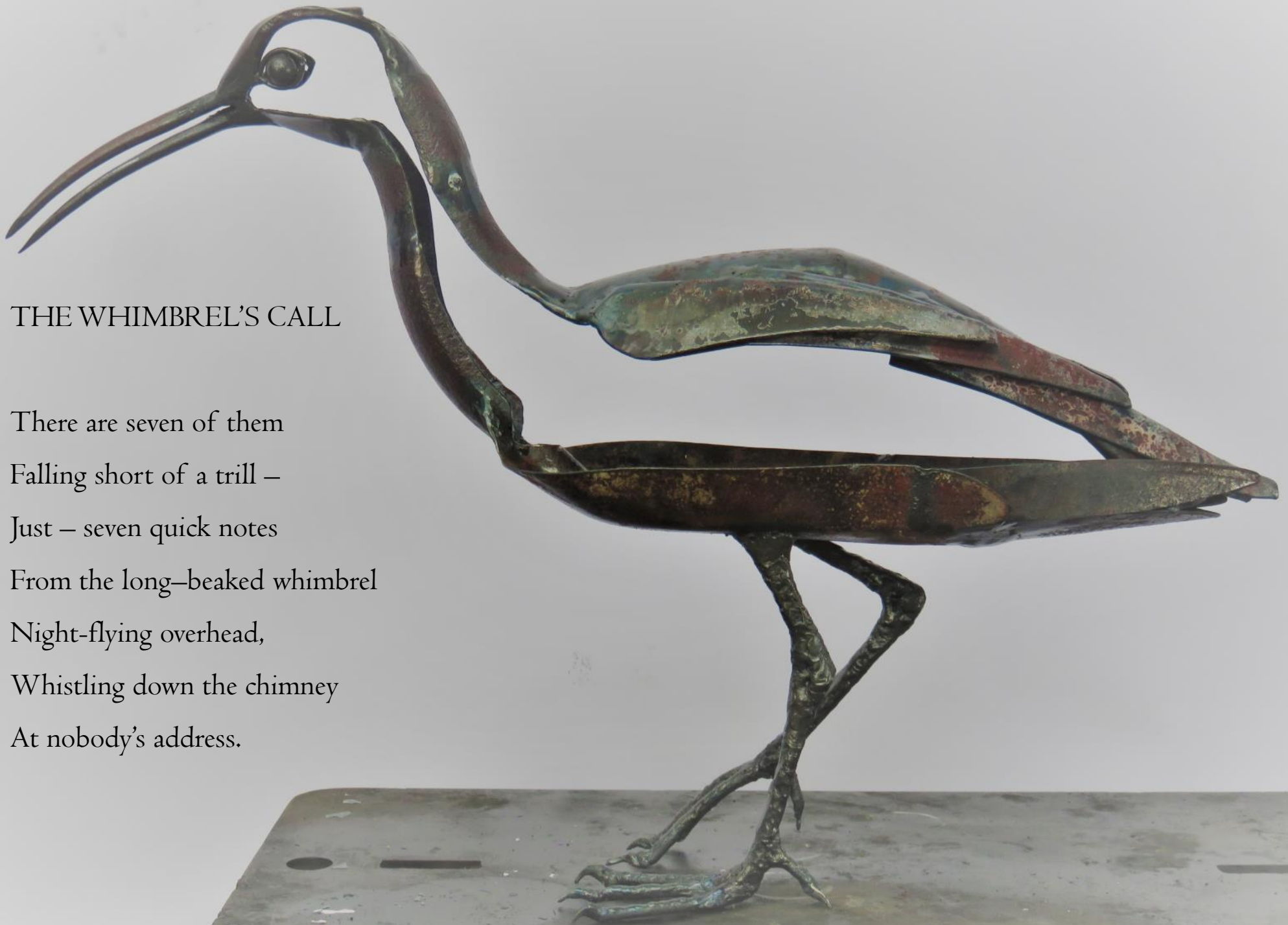
*A wonderful collaboration between good friends Michael Longley,  
the celebrated Irish Poet and Sculptor Helen Denerley.*



# ACROSS THE EQUINOX

7th July—29th Aug 2018

Michael Longley the Irish Poet, who has been called "one of the finest lyric poets of our time", has collaborated with Helen Denerley, the renowned Scottish Sculptor to create this exhibition. Helen and Michael have known and been inspired by each other for many years. This exhibition will feature sculpture and poetry produced as a result of that inspiration.



## THE WHIMBREL'S CALL

There are seven of them  
Falling short of a trill –  
Just – seven quick notes  
From the long-beaked whimbrel  
Night-flying overhead,  
Whistling down the chimney  
At nobody's address.







## STONECHAT

A flicker on the highest twig, a breast  
That kindles the last of the fuchsia flowers  
And the October sunset still to come  
When we face the Carricknashinnagh shoal  
And all the islands in a golden backwash  
Where sanderlings scurry, two cormorants  
Peaking at me and you over breakers  
That interrupt the glow, behind us  
A rainbow ascending out of Roonkeel  
High above Six Noggins, disappearing  
Between Mweelrea's crests, and we return  
To the white cottage with its fuchsia hedge  
To share for a second time the stonechat's  
Flirtatious tail and flinty scolding.



## ARRIVAL

It is as though David had whitewashed the cottage  
And the gateposts in the distance for this moment,  
The whooper swans' arrival, with you wide awake  
In your white nightdress at the erratic boulder  
Counting through binoculars. Oh, what day is it  
This October? And how many of them are there?



## THE HARE

Through a grille of rushes and yellowing grass  
You watch me come and go at Carrigskeewaun,  
Until I loom over your form like Mweelrea.

Your draughty lackadaisical basket still warm,  
Still warm the earth that was rough and ready  
Even when you were born, your blue eyes open.

You juke and disappear behind the cottage,  
Then lollop after me to Lucca and join  
Elephant, wild boar, dromedary on the façade.

You leave pawprints in marble and your grassy  
Boat-shape with its inch of improvised rigging  
Sets sail past the cottage and the cathedral.







## LULLABY

for Eddie

The vixen will hear you cry, and the swans  
On their eggless experimental nest,  
And the insomniac curlew, and the leveret  
That leaves a dew-path across the lawn.







## LAPWING

The lapwing and I

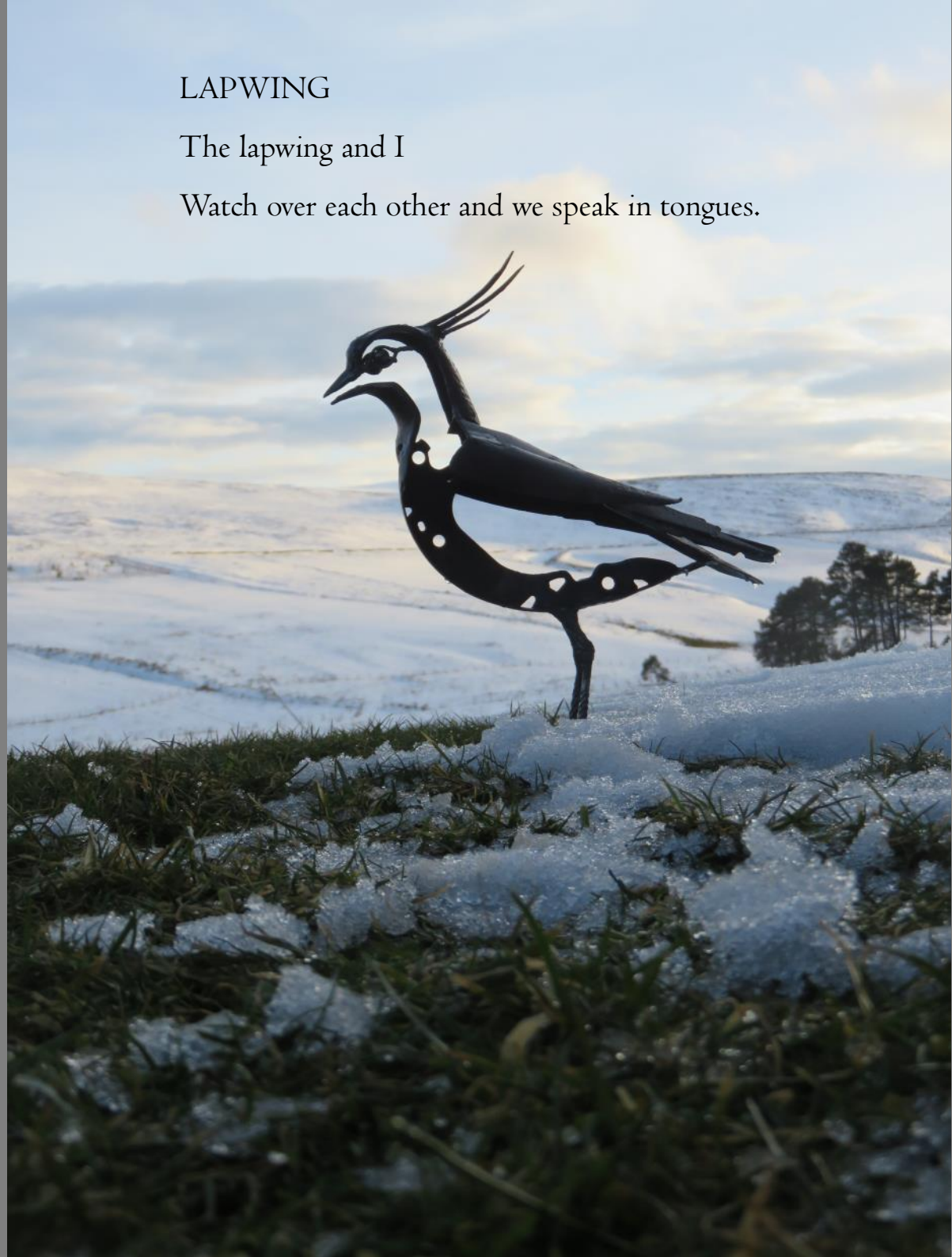
Watch over each other and we speak in tongues.

## LAPWING

So let it be the lapwing's cry

That lodges in the throat as I

Raise its alarum from the mud



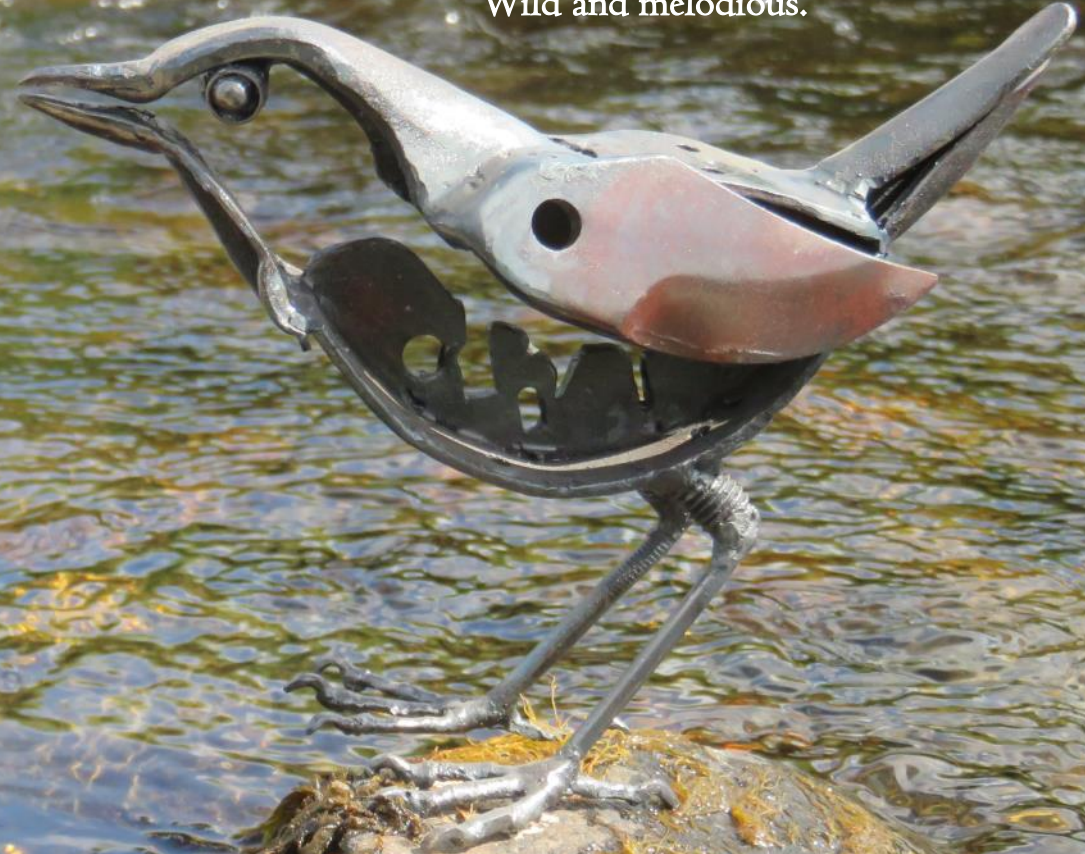


## THE DIPPER'S RANGE

I walk beside the stream  
Within the dipper's range:  
Winter's only songbird,  
Wild and melodious.

## DIPPER

the cataract's deluge  
and nightmare a curtain  
he can go behind,  
heavy water rolling  
over feather and eye  
its adhesive drops,  
beneath his feet the spray  
thickening into moss.







## DONKEYS

### I

Have the donkeys abandoned Connemara  
And hobbled away on painful slippers?  
We used to converse with their heavy heads  
On the way to Leenane, the Famine Road.  
Rosemary Garvey, blind and in her eighties,  
Cared for two donkeys at Dadreen, Harriet  
And Josie, patient in their bumpy field.  
She had memorised the path and brought them  
Carrots with the tops on, wrinkled apples.

### II

Homer compares Ajax to a donkey  
Hoodwinking inexperienced farm-hands  
And - obstinate, immune to wallopings –  
Kicking up his heels and gobbling barley  
While feebly they lambast his back and fail  
To budge him till he's had his bellyful.

### III

Of all young animals the loveliest,  
Rosemary said, especially their woolly ears.  
Her coffin has become a jennet's creel.



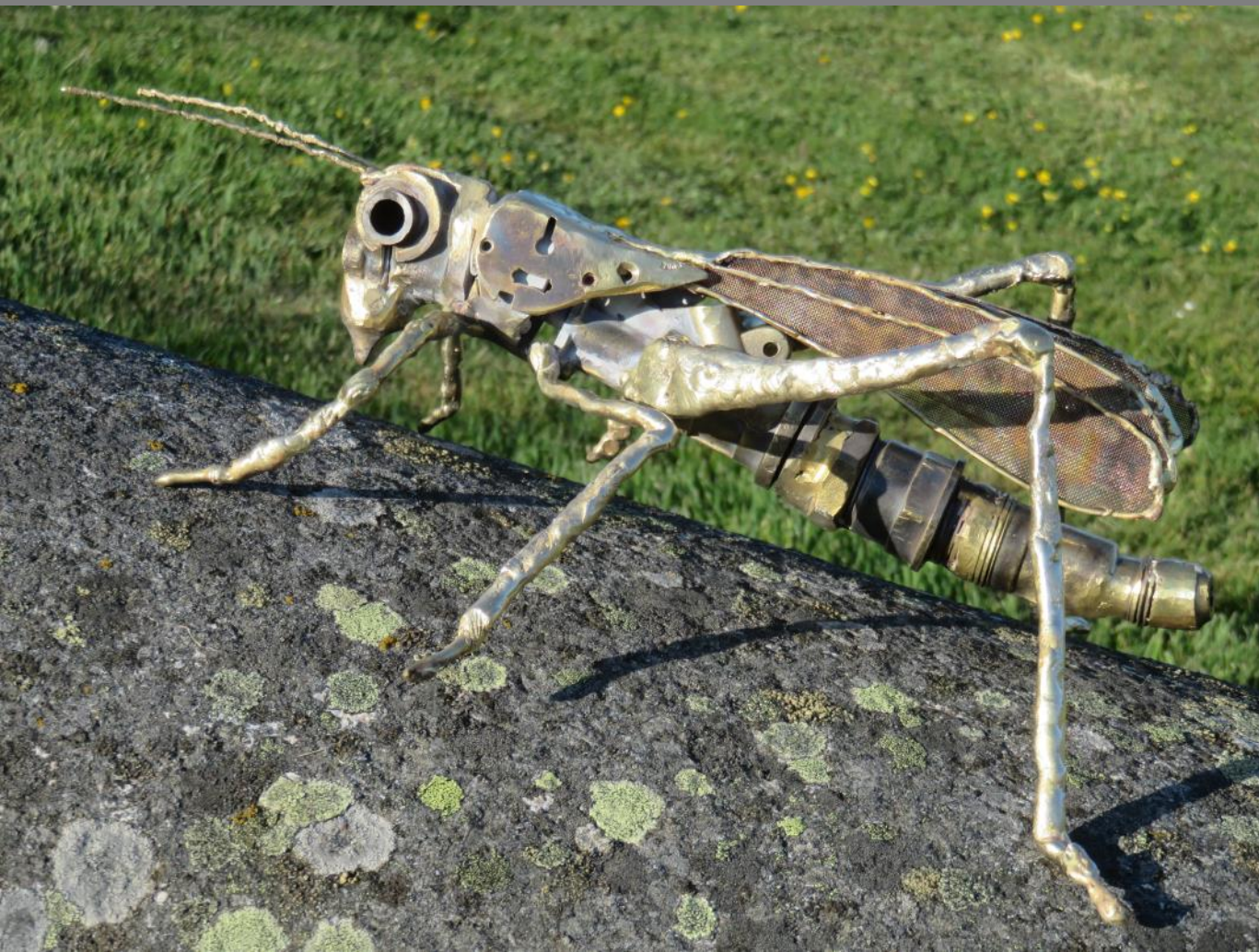
TRAIN

.....

A rainbow mirrored where a heron stands.







## A GRASSHOPPER

for Rebecca

To you, grasshopper, our blessing  
When you drink a tiny sip  
Of dew and on the petal's tip  
Sing your praises like a king:  
For all those things are your domain –  
All that in the fields you notice,  
All that the forest nourishes.  
And you are honoured among men,  
Sweet prophet of the spring's advance.  
The Muses take delight in you,  
And Phoebus Apollo too  
Who gave you piercing descants.





I am the mud and spittle  
That make the swallows' nest.

I am the pipistrelle bat  
At home among constellations.





I am the overhead raven

With his eye on the lamb's eye.

I am the trout that vanishes  
Between the stepping stones.







I am the night-flying whimbrel  
That whistles down the chimney.

I am the stoat that dances  
Around the erratic boulder.





## THE EEL-TRAP

I lie awake and my mind goes out to the otter  
That might be drowning in the eel-trap:

your breathing

Falters as I follow you to the other lake  
Below sleep, the brown trout sipping at the stars.

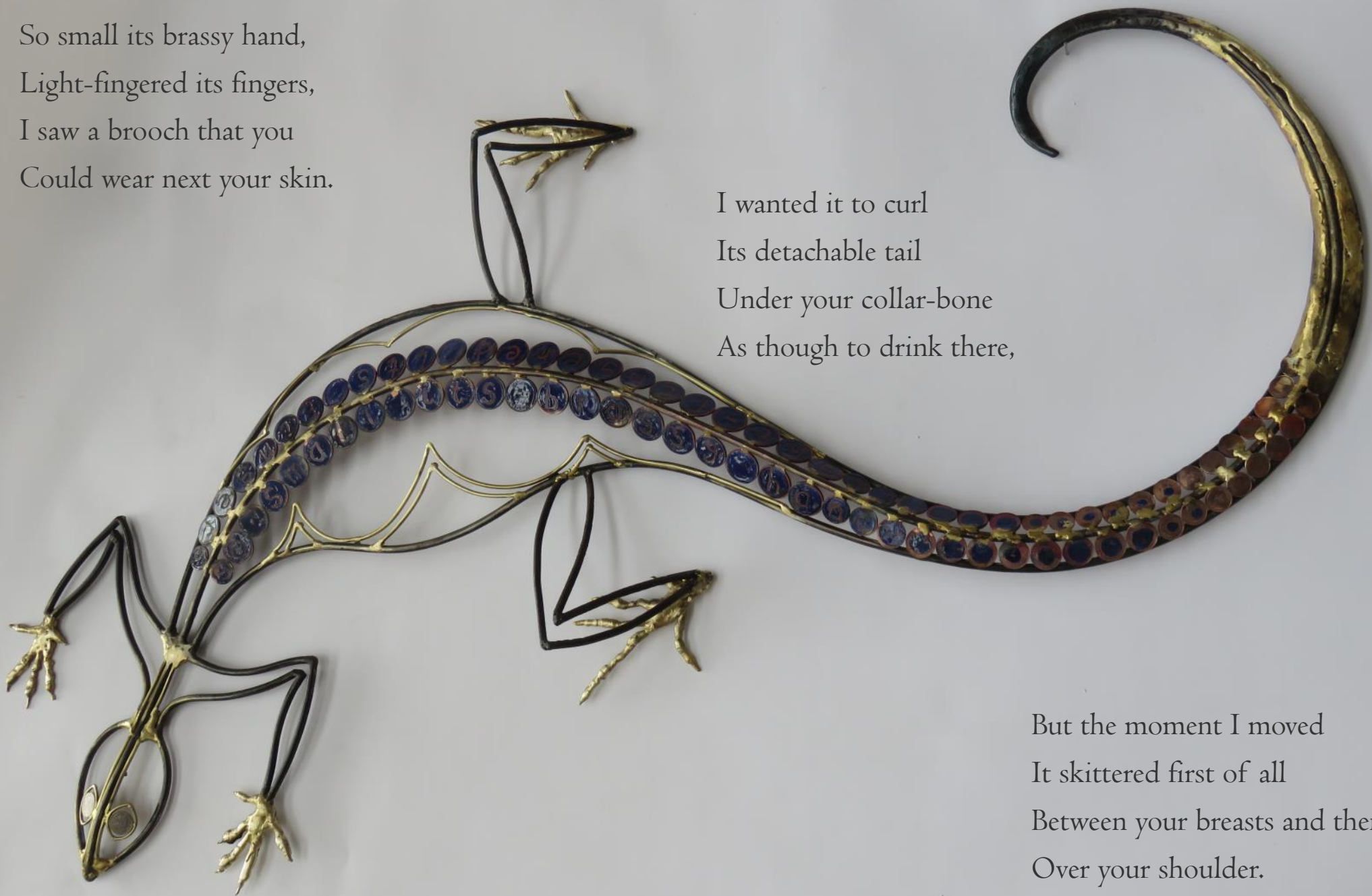


## LIZARD

So small its brassy hand,  
Light-fingered its fingers,  
I saw a brooch that you  
Could wear next your skin.

I wanted it to curl  
Its detachable tail  
Under your collar-bone  
As though to drink there,

But the moment I moved  
It skittered first of all  
Between your breasts and then  
Over your shoulder.







## Biography

1956 Born Roslin, Midlothian

1977 Graduated from Grays School of Art, Aberdeen

1995 Elected Professional Member of the Society of Scottish Artists

## Commissions

2016 Hong Kong, 6m giraffe for private client

2015 Westhill Shopping Centre, wild boar with piglets

2015 Montejaque, Spain, Goat for the village square

2012 West Side Primary School, Lewis. Raven sculptures for entrance to new school.

2008 Duloch Park, Dunfermline sheep and poultry for a new shopping centre.

2008 Miller's Yard, Cromarty: Ammonite. (Winner of the IAA Awards for architecture)

2007 Stirling University Courtyard: 3 Oyster Catchers.

2006 Glan Clwyd Hospital, N Wales: Humming Bird Memorial Sculpture

2005 Omni building, Edinburgh: Dreaming Spires. 2 larger than life giraffes on the pavement.

2004,2005 Eniwa Garden Project, Hokkaido: Japan. Dragon railings, arches and birds.

2004 Horizon Scotland, Forres: Sheep and lamb, HotDogs, and Birds for new Enterprise building

1999 Clackmannanshire Council, Tillycoultry: The Devonside Sculptures

1999 Alford Academy Sculpture Garden: The Alford Panther

1997 Safeway PLC, Inverurie: "A Flying Visit"

1994 Princess Royal Trust for Carers, Aberdeen: Commemorative Piece

1994 Govan Housing Association, Glasgow: The Govan Milestone

1991 Grampian Regional Council, Inverurie: The Inverurie Sundial

1980 Belmar Engineering and Atlantic Drilling, Aberdeen

1980 Carronhall Engineering, Stonehaven: The Carronhall Dinosaur

1979 William Wilson & CO, Aberdeen

1978 Aberdeen District Council: The Hazlehead Pterodactyl

1977 Aberdeen District Council: Musical Play Sculpture

Private Commissions Worldwide



### Solo and Two-Artist Exhibitions

2018 Rhue Gallery, Ullapool, Across the Equinox, a collaboration with poet Michael Longley.

2017 Kilmorack Gallery, HOLLOW. A collaborative exhibition with painter Peter White

2014 Rhue Gallery, Ullapool. Molto in Parvo, Miniature sculpture

2013 Kilmorack Gallery, Beaulieu, Positive Space

2011 Pittenweem Arts Festival Invited artist

2010 Harley Gallery, Wellbeck, Mechanimals

2009 Kilmorack Gallery, Beaulieu: Fight or Flight.

2008 Gleneagles: Sculptures in the Garden

2007 Beaux Arts, Bath: The Space Between.

2006 Heinzl Gallery, Aberdeen: Between the Lines.

2003 Kilmorack Gallery, Beaulieu: Hare Moon and Sky Hawk

2002 Milton Gallery, Aberdeenshire: Between the Desert and the Deep Blue Sea

2001 Heinzl Gallery, Aberdeen: Cabras and Perros

2000 Champs Hill, West Sussex: Wild Wood

1999 Timespan Gallery, Highlands: Time and Tide

1998 Kilmorack Gallery, Beaulieu: Running with Wolves

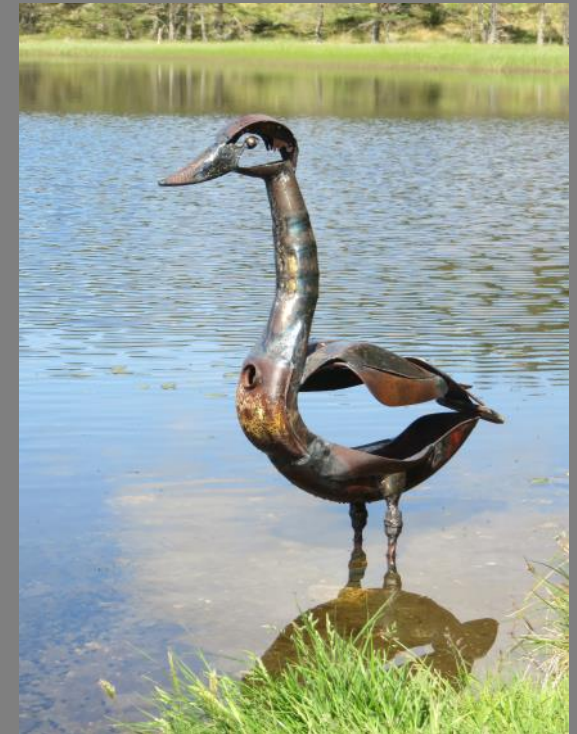
1997 Conoco UK LTD, Aberdeen: Durer's Rhinoceros

1996 The Kenny Gallery, Galway Faith: Hope and Clarity

1995 Woodwick House, Orkney: Beauty & the Beast

1994 Warehouse Gallery, Banff: Objects of Desire

1993 The Ulster Arts Club, Belfast: The Sculptor and the Weaver





## Group Exhibitions

2018 Duff House, Banff. Invited artist at Aberdeen Artist's Society Annual Exhibition

2017 British Art Portfolio, The Sicily Oak Gallery Cheshire

2017 Tatha Gallery Fife, Connections

2015 Oseana Museum, Bergen. Crocodile and Hen Harrier Food pass, permanent collection,

2014 Knebworth House, The British Art Portfolio Sculpture Exhibition

2014 Kilmorack Gallery, Beaulieu, Sculptors' drawings

2014 The Scottish Gallery, Edinburgh, Summer show

2013 Caol Ruadh Sculpture Park, Kyles of Bute, Maritime Exhibition

2013-1991 Scottish Society of Artists, Annual Exhibition, Edinburgh

2012 Antarctic Exhibition, Moncrieff Bray Gallery Petworth

2011 Chichester Cathedral, Sculpture in Paradise

2010 An Talla Solais, Ullapool, In Response 2 Norman MacCaig

2010 Roger Billcliffe Gallery, Glasgow, Design Collection

2009 Cambo Snowdrop Festival, St Andrews

2007/2009 Touring Britain, Seeing Dragons in the Clouds.

2006 Philharmonic Arts Centre, Florida

2005 Beaux Arts, Bath

2004 Art Parks International, Guernsey

2004 Philharmonic Arts Centre, Naples, Florida

2003 Q2 Gallery, Dundee,

2003 Royal Glasgow Institute, Annual Exhibition. (Prize winner)

2003 Invited artist at Burghley Sculpture Garden, Lincolnshire.

2003 Art Outside, Savill Garden, Windsor Park.

2002 F.T. Sabin Gallery, London, Sculpture Under English Skies

1997 City Arts Centre, Edinburgh and touring UK, Animal Magic

1997 John Martin of London, On a Grand Scale

1996 Mayfest (SSA), Glasgow, Brave Art

1995 Artspace Galleries, Aberdeen, Sunset Song

1994 The Kenny Gallery, Galway, Heroes & Heroines



## Events

- 2002 "Flight of Fancy" A British romantic comedy featuring sculpture as part of the set. Starring Jason Flemyng and directed by David Fairman.
- 2001 "Boundaries" A collaborative Iron Pouring event with Professor George Beasley; broadcast live to The International Sculpture Conference, Pittsburg
- 1998 "Running with Wolves" A cross art form performance commissioned by the Highland Festival combining sculpture, painting, dance, music and lighting
- 2004 Invited by the government of South Georgia to make a life size whale from the scrap in an old whaling station. Visited the island in January to carry out a feasibility study and while there produced a small whale.
- 2006 "The exquisite cupola" A furnace made by several international artists for the Iron conference in Ironbridge
- 2011-2013 Artist in Residence with ACES. Working with scientists for an international conference on Conservation Conflicts
- 2012 Crocodile sculpture used for promotional film by Visit Scotland
- 2014 Shuffle, a theatre event featuring a collaboration with theatre director John McGeoch
- 2015 Shuffle, a collaborative theatre event with musicians Tom Blasdale and Gregor Donaldson
- 2015 Artist in residence with Plan B contemporary arts co.





All works are for sale; for further information about dimensions and prices please contact the Gallery

[flick@rhueart.co.uk](mailto:flick@rhueart.co.uk)

01854 612460

