

# 37 Red Leaves

*Diary of a year, March 2011 – March 2012*



KATY SPONG 2012

*Red Leaves*

*acrylic on canvas*

*70 x 70cm*

# 37 Red Leaves

*Diary of a year, March 2011 – March 2012*

EXHIBITION OF NEW WORK

By

KATY SPONG

Saturday 28th July 2012 – 15th September 2012

RHUEART GALLERY, RHUE, ULLAPOOL, ROSS-SHIRE SCOTLAND IV26 2TJ

01854612460    flick@rhueart.co.uk    www.rhueart.co.uk





*Geese skein*

acrylic on canvas

70 x 70cm

.....overhead, the long skein unravelling and re-forming, an immense living calligraphy that, however many times you see it, still spells out 'This is Great Business'. It is as near a sacred message as you will get from the natural world.....

Richard Mabey

A Brush with Nature

## 37 Red Leaves

*Diary of a year, March 2011 – March 2012*

These monoprints are an account of a year I spent observing the movement of nature and life in and around Cuil Bay. I have tried to capture the small and big things that help us keep count, to mark the passage of time, like the red leaves of an acer tree clinging on just after the big shedding or the V of migrating geese seen through falling snow.

I have chosen the medium of monoprint to record these happenings.

Monoprinting is the method of producing one unique print, which can be carried out in a single printing or by layering several printings on the same image. The image is made using oil inks on a copper plate and then transferred to paper through an etching press. I favour a subtractive technique whereby I apply the ink over the entire plate and the image is created in negative by removing the medium with various tools.

Included are 2 editioned prints made using polymer photogravure. I first draw my image onto transparent paper which is then exposed on a polymer plate in an exposure unit. Once developed the polymer plate is then inked intaglio and printed on an etching press. I further work the image by combining this with either monoprint or chine colle' (fine Japanese paper added to the surface of the plate prior to the press transfer) to produce the finished print.

Most of these prints have been made at Highland Print Studio in Inverness.





APRIL 2011



*Canoeing to Balnagown*

monoprint

25 x 15 cm

APRIL 2011



*Crows annoying Gulls 1*

monoprint

20 x 20 cm



APRIL 2011



*Crows annoying Gulls 11*

monoprint

20 x 20 cm

MAY 2011



*Hot Day*

monoprint

20 x 20 cm



MAY 2011



*Pigeons in tangled branches*

monoprint

20 x 20 cm



JUNE 2011



*Drying Gloves*

monoprint

20 x 20 cm

JUNE 2011



*Two Black Tupps*

monoprint

20 x 20 cm



JULY 2011



*Protected 1*

monoprint

20 x 20 cm



JULY 2011



*Protected 11*

monoprint

20 x 20 cm

JULY 2011



*Fishing*

monoprint

20 x 20 cm



AUGUST 2011



*Fishing Nets*

monoprint

20 x 20 cm



AUGUST 2011



*Drying Nets*

monoprint

20 x 20 cm

AUGUST 2011



*Late Summer Grasses*

monoprint

25 x 15 cm



SEPTEMBER 2011



*Cormorant Rock*

monoprint

20 x 20 cm



SEPTEMBER 2011



*Heron flock stand together*

monoprint

25 x 15 cm

OCTOBER 2011



*Silver Birch Glade*

monoprint

25 x 15 cm



OCTOBER 2011



*Path through Silver Birch*

monoprint

25 x 15 cm

NOVEMBER 2011



*Young Buck on the hill*

monoprint

20 x 20 cm



DECEMBER 2011



*Larch and the Moon*    monochrome    15 x 25 cm

JANUARY 2012



*Skein of Geese*

monoprint

30 x 30 cm



JANUARY 2012



*Landing in the Snow*

monoprint 20 x 20 cm

JANUARY 2012



*Snow Landing*

monoprint 20 x 20 cm



JANUARY 2012

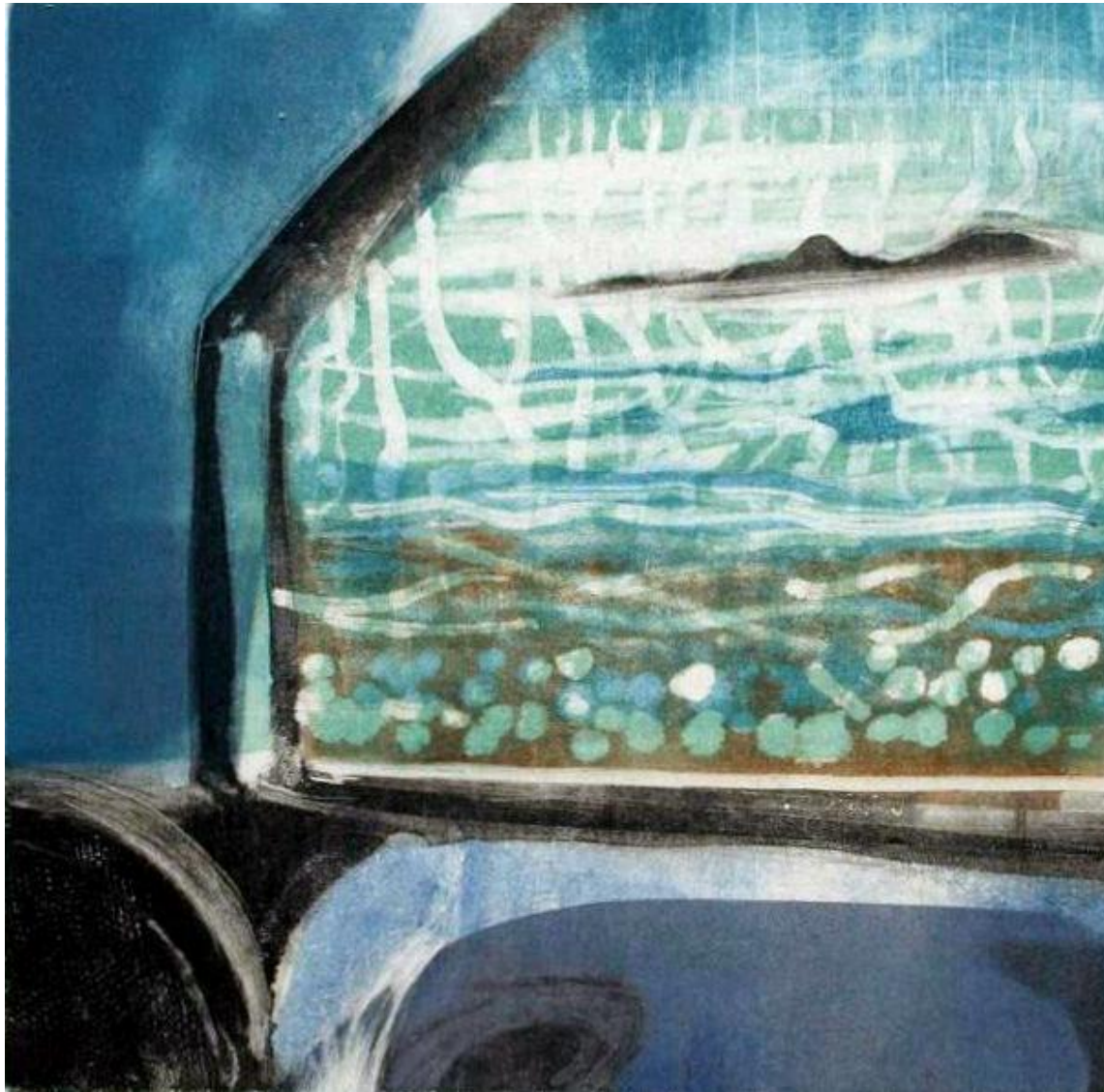


*Bill Spooks Gulls*

monoprint

30 x 30 cm

FEBRUARY 2012



*Rain on Car window*

monoprint 20 x 20 cm



FEBRUARY 2012

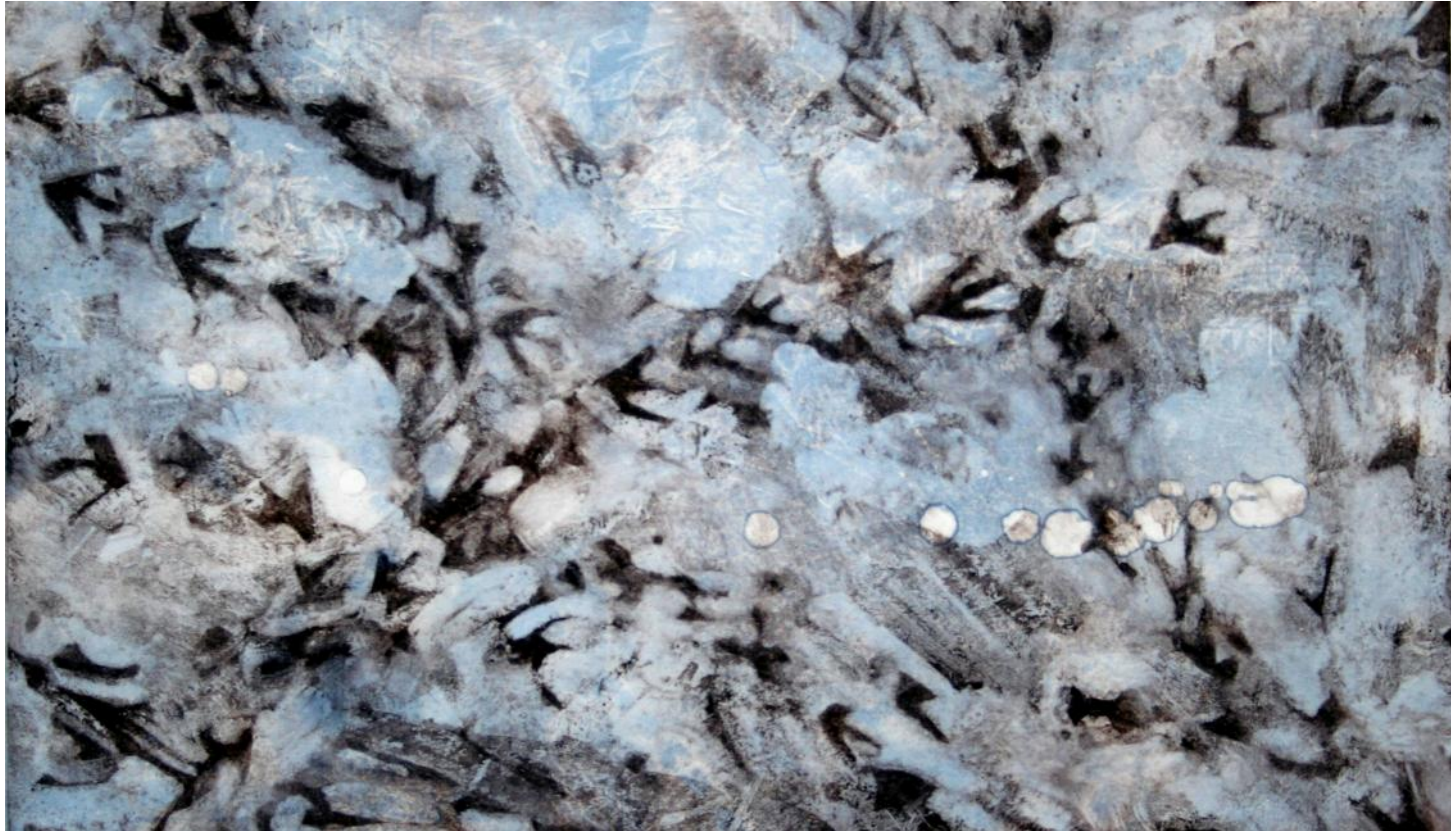


*Burnt Hill in winter*

monoprint

20 x 20 cm

FEBRUARY 2012



*Tracks in the Snow*

monoprint

25 x 15 cm



MARCH 2012

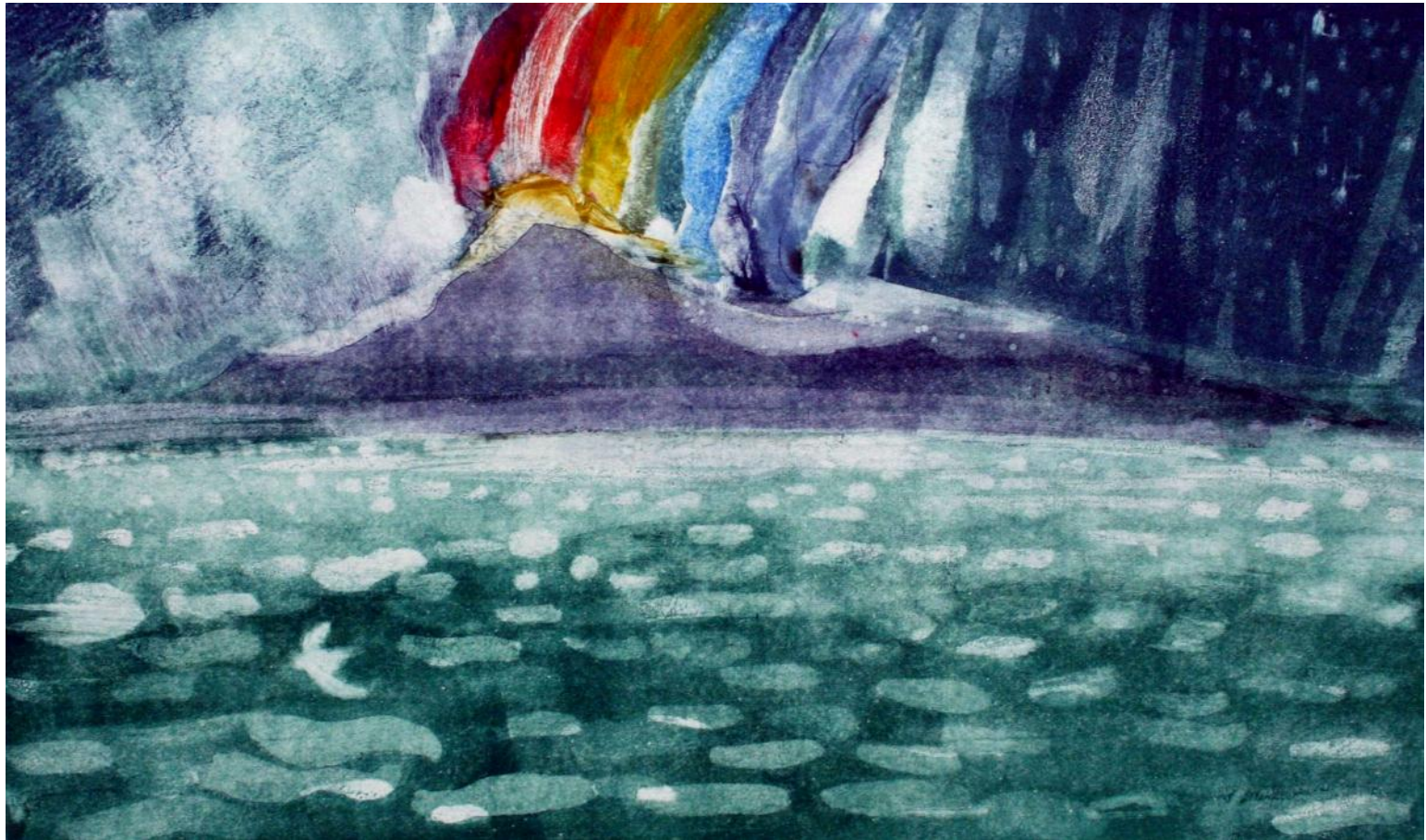


*Windy Day*

monoprint

20 x 20 cm

March 2012



*Rainbow over Balnagown*

monoprint

25 x 15 cm



*All prints are on BFR Rives or Fabriano Rosaspina paper*

## Handmade Polymer Photogravure Print



*Skein of Geese*

Edition Of 8

20 x 20cm



# Handmade Polymer Photogravure Print



*37 Red Leaves*

edition of 6

20 x 20 cm

# KATY SPONG

1971    born Uganda, grew up in East Africa  
1999    moved to Scottish Highlands

## education

1999    graduated BA (Hons) Art with QTS, First Class    University of the West of England, Bristol

## solo exhibitions

2011	RhueArt Ullapool	
2010	Castle Gallery, Inverness	The Unexpected Moment
2007	Castle Gallery, Inverness	New Paintings
2004	Castle Gallery, Inverness	New Highland Paintings

## group exhibitions

2011	RhueArt in Edinburgh	Perception
2010	Wey Gallery, Surrey	Winter exhibition
	Tolquhon Gallery, Aberdeen	Winter exhibition
	Affordable Art Fair, London	(with RhueArt)
	Tolquhon Gallery, Aberdeen	'My Favourite...'
	Mall Galleries London	Art for Survival
	Glasgow Art Fair	(with RhueArt & Castle Gallery, Inverness)
2009	Castle Gallery, Inverness	Winter exhibition
2008	Castle Gallery, Inverness	Summer and Christmas exhibitions
2007	Castle Gallery, Inverness	Summer and Christmas exhibitions
2006	Castle Gallery, Inverness	Christmas exhibition
2005	Glasgow Art Fair	(with Castle Gallery, Inverness)



### *group exhibitions con't*

2004	Castle Gallery, Inverness	Christmas exhibition
	Castle Gallery, Inverness	Spring/Summer show
	Glasgow Art Fair	(with Castle Gallery, Inverness)
2003	Castle Gallery, Inverness	Christmas exhibition
	Jerdan Gallery, Crail, Fife	Summer exhibition
	Glasgow Art Fair	(with Castle Gallery)
	Castle Gallery, Inverness	Spring/Summer show
2002	Jerdan Gallery, Crail	Christmas exhibition
	Jerdan Gallery, Crail, Fife	three-man show
	Castle Gallery, Inverness	Summer and Christmas exhibitions
	Glasgow Art Fair	(with Highland Arts)
2001	Glasgow Art Fair	(with Highland Arts)

### *awards*

2010	shortlisted Wildlife Artist of the Year award	(DSWAY Art for Survival, Mall Galleries, London)
------	---	--

### *residencies*

2008—11	Artist in Residence at Room 13, Duror Primary School, Appin, Argyll	
2010	Artist in Residence at Lochaber High School and Kilchuimen Academy for the <i>Mapping Our Land</i> project in conjunction with Highland Print Studio,	

# RHUEART

*Rhueart Gallery, Ullapool, Ross-shire, Scotland IV26 2TJ*

*01854612460*

*info@rhueart.co.uk*

*www.rhueart.co.uk*